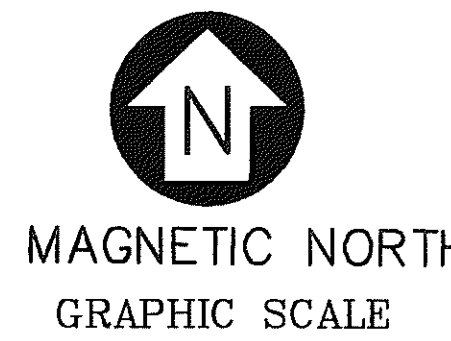
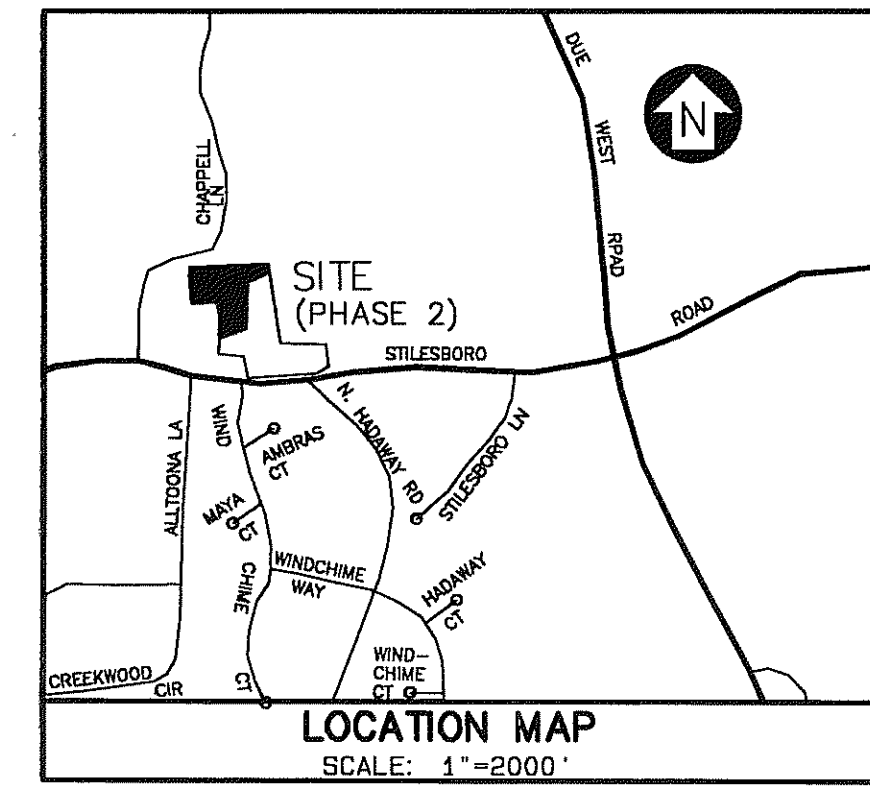


GENERAL NOTES

- 1. TOTAL ACREAGE = 26.01 ACRES (UNIT 2)
2. TOTAL NUMBER OF LOTS = 48 LOTS
3. DENSITY: 1.85 LOTS/ACRE
4. PROPERTY IS ZONED R-20 (SC 2-77/2001)
5. OWNER/DEVELOPER: OLDE ENGLAND LAKE DEVELOPMENT, LLC.
6. ENGINEER/SURVEYOR: WALDEN, ASHWORTH & ASSOCIATES, INC.



- LEGEND
ATF ANGLE IRON FOUND
BLDG BUILDING
BOC BACK OF CURB
CRK CREEK
CPT CRIMP TOP PIPE

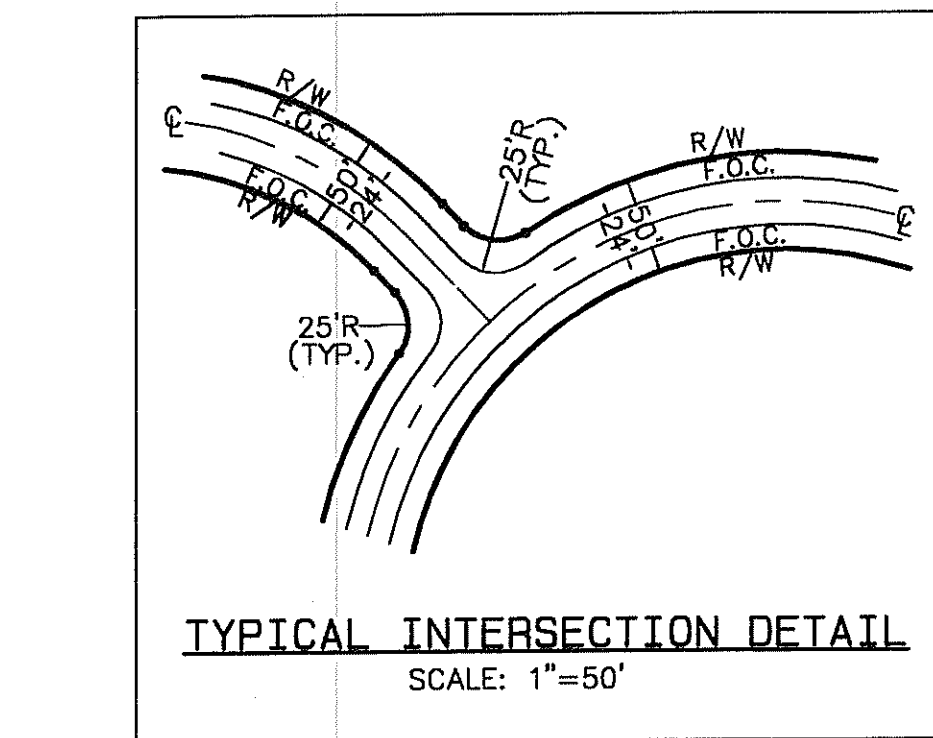
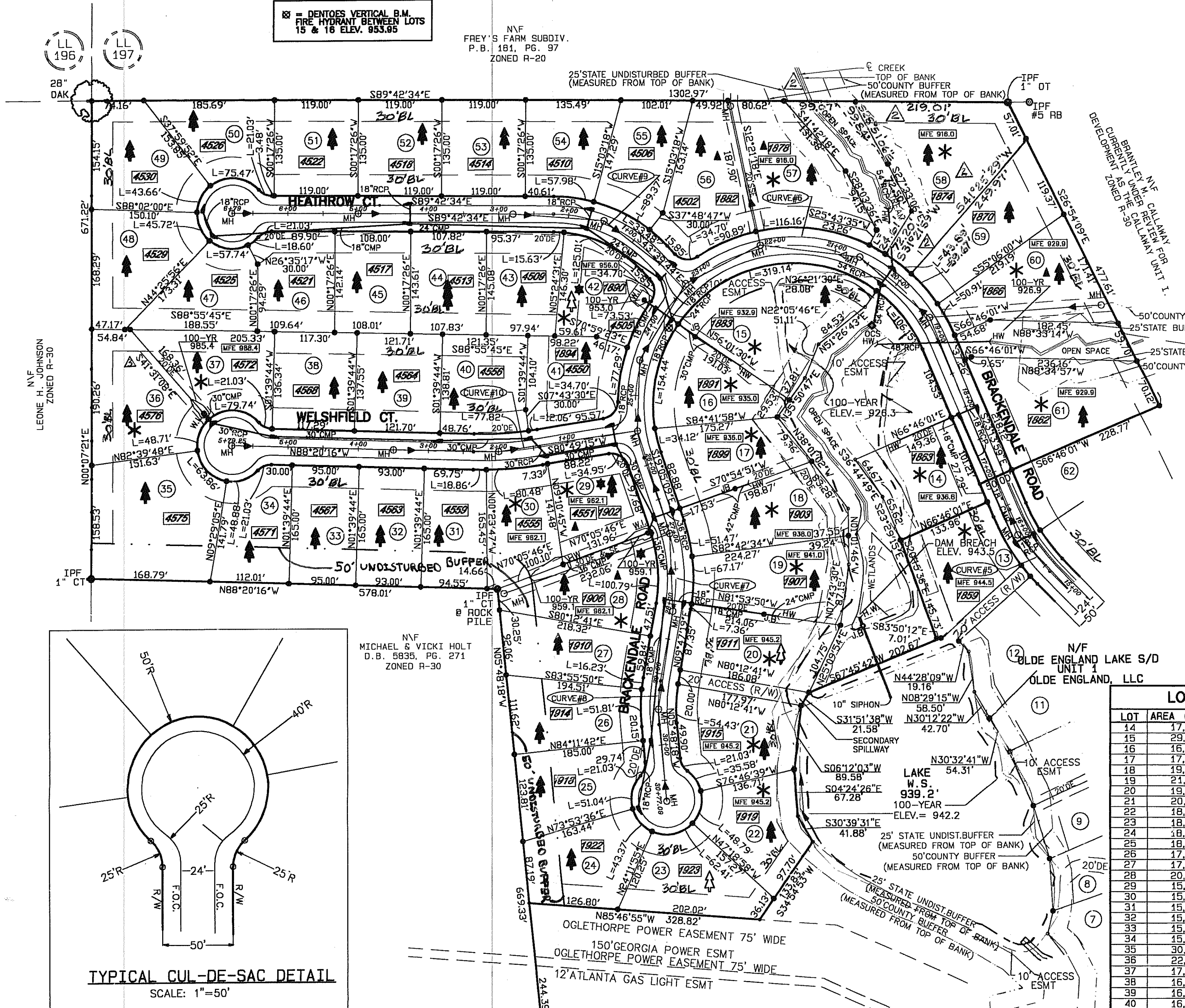
THE FIELD DATA UPON WHICH THIS MAP OR PLAT IS BASED HAS A CLOSURE PRECISION OF ONE FOOT IN 13,000 FEET AND AN ANGULAR AREA OF .02 PER ANGLE POINT...

THIS MAP OR PLAT HAS BEEN CALCULATED FOR CLOSURE AND IS FOUND TO BE ACCURATE WITHIN ONE FOOT IN 100,000 +/- FEET.

- TREE PROTECTION - SITE PLAN REQUIREMENT LEGEND
DENOTES: THIS LOT HAS A DESIGNATED TREE PROTECTION AREA...
DENOTES: THIS LOT HAS A REQUIREMENT TO PLANT (SEE # IN SYMBOL) SHADE TREES...
* DENOTES LOTS THAT REQUIRE A SITE PLAN PREPARED SUBJECT TO THE REQUIREMENTS OF THE COBB COUNTY CODE SEC. 58-68(3).

LOT AREAS table with columns: LOT, AREA (SQ. FT.), AREA (ACRE). Lists lots 12 through 61 with their respective areas.

TABLE OF DEDICATIONS table with columns: ROAD, AREA (SQ. FT.). Lists Brackendale Road (1,643 LF), Heathrow Court (679 LF), and Welshfield Court (579 LF).



STREET CENTERLINE CURVE DATA TABLE with columns: CURVE, RADIUS, LENGTH, TANGENT, CHORD, BEARING, DELTA. Lists curve data for lots 5 through 10.

STATE LAW PROHIBITS THE PRIVATE CONSTRUCTION, PLANTING, OR OTHERWISE MAKING IMPROVEMENTS ON THE DEDICATED RIGHT-OF-WAY...
NOTE: OPEN SPACE AREAS MAY BE UTILIZED FOR LOW IMPACT OUTDOOR ACTIVITIES...

PLAT FILED IN OFFICE 4-30-04 4:54P RECORDED IN PLAT BOOK 222 PAGE 77
Jay C. Stephenson, Clerk, COBB COUNTY SUPERIOR COURT

COBB COUNTY DEVELOPMENT CERTIFICATION
This plat, having been submitted to Cobb County and having been found to comply with the Cobb County Development Standards...

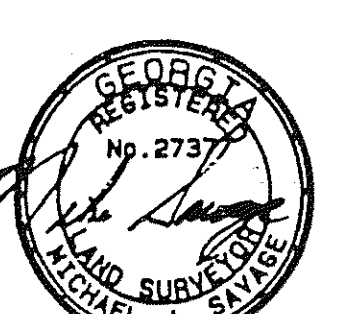
This plat is subject to the covenants set forth in the separate document (SMAY 24 2005 dated SEPT. 15, 2003, which hereby becomes a part of this plat...

SOUTHERN SURVEYING AND PLANNING, INC.
10150 BALLGROUND HIGHWAY
SUITE 102
BALLGROUND, GEORGIA 30107
(770) 735-3795

OLDE ENGLAND LAKE S/D
UNIT II
FINAL PLAT

WALDEN, ASHWORTH & ASSOCIATES, INC.
CONSULTING ENGINEERS
P.O. BOX 6462
MARIETTA, GEORGIA 30065
(770) 956-7879

Revisions table with columns: NO., DESCRIPTION, MADE, CHKD., DATE, DRAWING NO., REFERENCE DRAWINGS. Lists revisions for removed min. f.f. elev. and revised common lot lines.



Scale and Date table with columns: SCALE, DATE. Shows scale of 1"=100' and date 4/28/04.

Design and Approval table with columns: DESIGN BY, DRAWN BY, CHECKED BY, SUPV. BY, SUBM'TD. BY, APP'D BY, DATE. Lists names and dates for each step.

OLDE ENGLAND LAKE DEV., LLC
LAND LOTS 197 & 222
20th DISTRICT
COBB COUNTY, GEORGIA

JOB NO. 21048 DRAWING NUMBER 21048-FP-02 REV. NO. 2